

POUNDBURY

— DORCHESTER —



Plot 371

3 Bedroom Terraced House



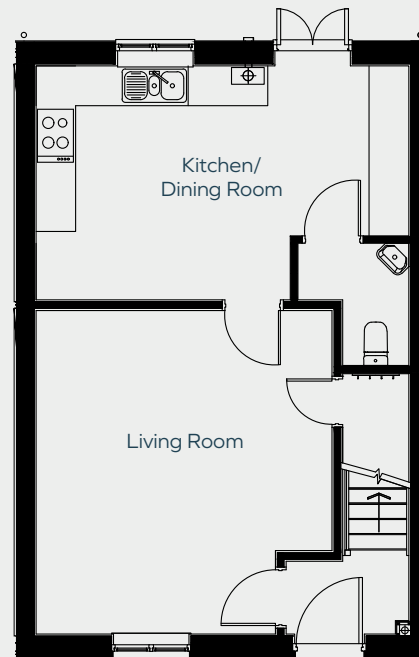
Plot
371

3 Bedroom Terraced House

98sqm/1054sqft

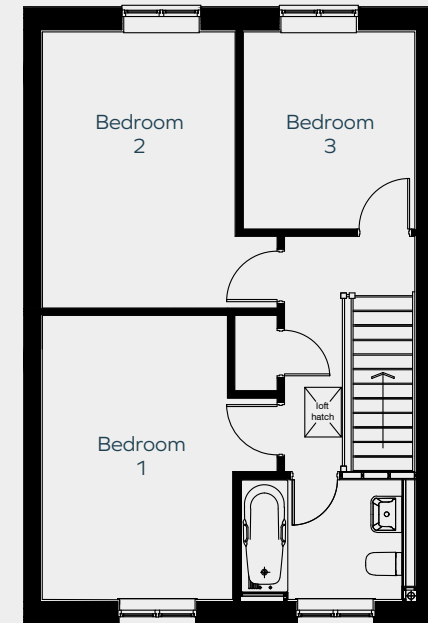
- Spacious living room
- Kitchen/dining room overlooking the garden
- 3 Bedrooms
- Family bathroom
- Enclosed rear garden
- Single garage and parking space

Ground Floor



Living Room	4.9m x 4.4m max	16'0" x 14'5"
Kitchen/Dining Room	5.6m x 3.5m	18'4" x 11'5"

First Floor



Bedroom 1	4.2m x 2.9m	13'9" x 9'6"
Bedroom 2	4.1m x 2.9m	13'5" x 9'6"
Bedroom 3	3.0m x 2.6m	9'10" x 8'6"



Raising Standards. Protecting Homeowners



www.consumercode.co.uk



01305 213745
morrishhomes.co.uk

Plot floor plans are provided to indicate proposed floor layout for each home. Room measurements are accurate within + or - 50mm, however it is not recommended that these measurements are used for flooring installation, or such like, as plots can sometimes vary.