

OAKWOOD

CHARD



Plot 52

4 Bedroom Detached House



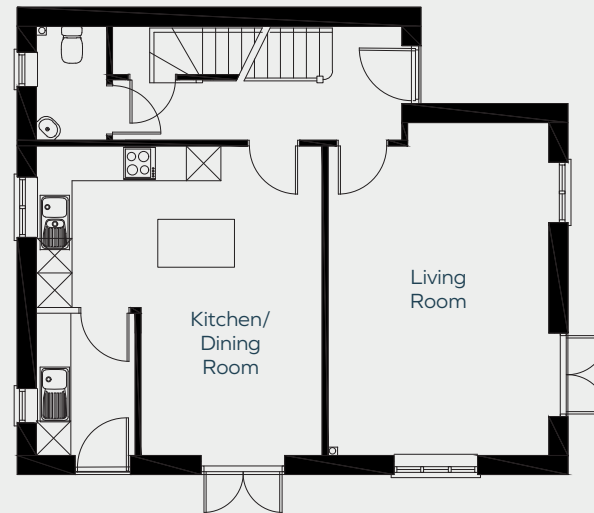
Plot 52

4 Bedroom Detached House 123sqm/1332sqft

- 4 Bedrooms
- Ensuite shower room
- Living room
- Kitchen/Dining room
- Utility room
- Double glazed windows
- Gas central heating
- Double Garage
- Two allocated parking spaces
- Garden

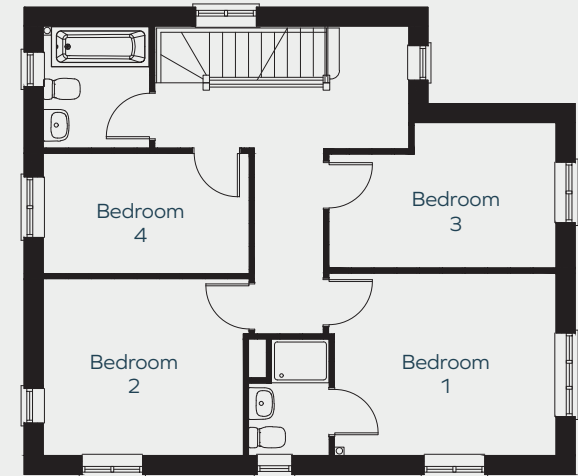
OAKWOOD — CHARD —

Ground Floor



Living room	5.7m x 3.8m	18'7" x 12'4"
Kitchen / dining room	5.2m x 4.8m max	17' x 15'7"

First Floor



Bedroom 1	3.8m x 3.1m	12'4" x 10'1"
Bedroom 2	3.4m x 3m	11'1" x 9'8"
Bedroom 3	3.9m x 2.5m	12'7" x 8'2"
Bedroom 4	3.5m x 2m	11'4" x 6'5"



Raising Standards. Protecting Homeowners



www.consumercode.co.uk



01460 68222
morrishhomes.co.uk

Plot floor plans are provided to indicate proposed floor layout for each home. Room measurements are accurate within + or - 50mm, however it is not recommended that these measurements are used for flooring installation, or such like, as plots can sometimes vary.