

# HOME 401

A three bedroom, mid-terrace home  
with allocated parking

## SPECIFICATION

Fully fitted kitchen  
with integrated appliances

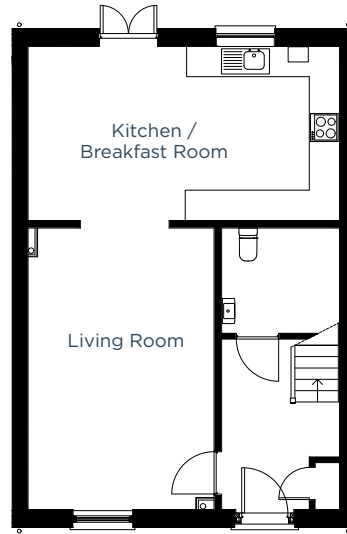
Master bedroom with en-suite

Contemporary bathroom

Downstairs cloakroom

Enclosed, fully turfed rear garden

Energy efficient,  
gas central heating



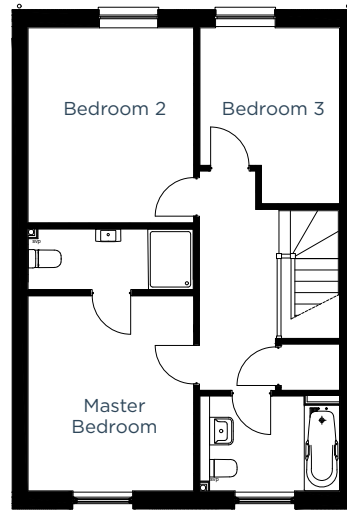
## GROUND FLOOR

### Kitchen / Breakfast Room

6.2m x 3.5m | 20' 3" x 11' 4"

### Living Room

5.6m x 3.7m | 18' 3" x 12' 1"



## FIRST FLOOR

### Master Bedroom

3.9m x 3.3m | 12' 7" x 10' 8"

### Bedroom 2

3.9m x 3.3m | 12' 7" x 10' 8"

### Bedroom 3

3.5m x 2.8m max | 11' 4" x 9' 1"

01305 213745 | [poundbury@morrishhomes.co.uk](mailto:poundbury@morrishhomes.co.uk)  
[morrishhomes.co.uk](http://morrishhomes.co.uk)

Floor plans are provided to indicate proposed floor layout for each home. Room measurements are accurate within + or - 50mm, however it is not recommended that these measurements are used for flooring installation, or such like.