



# HOME 405

A three bedroom, detached home  
with allocated parking

SYDENHAM SQUARE  
— POUNDBURY —

# HOME 405

A three bedroom, detached home  
with allocated parking

## SPECIFICATION

Fully fitted kitchen  
with appliances

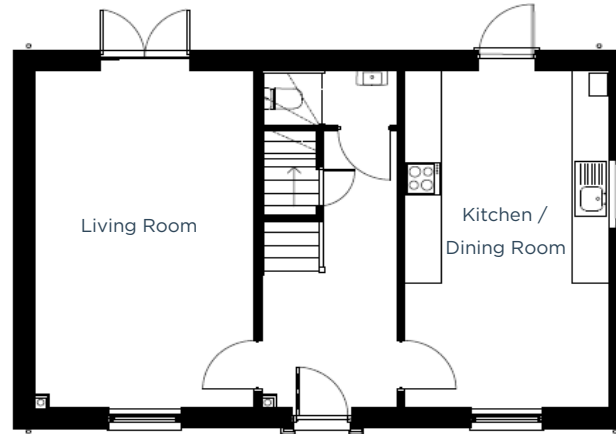
Master bedroom with en-suite

Contemporary bathroom

Downstairs cloakroom

Enclosed, fully turfed rear garden

Energy efficient,  
gas central heating



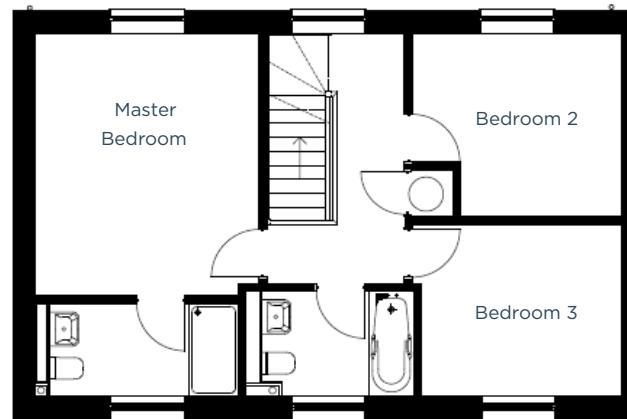
### GROUND FLOOR

#### Kitchen / Dining Room

5.8m x 3.m | 19' x 10' 8"

#### Living Room

5.8m x 3.5m | 19' x 11' 4"



### FIRST FLOOR

#### Master Bedroom

4.2m x 3.5m | 13' 7" x 11' 4"

#### Bedroom 2

3.3m max x 2.9m | 10' 8" x 9' 5"

#### Bedroom 3

3.5m x 2.7m | 11' 4" x 8' 8"