



HOME 394

A three bedroom, end of terrace home
with single garage and parking space

SYDENHAM SQUARE
— POUNDBURY —

HOME 394

A three bedroom, end of terrace home with single garage and parking space

SPECIFICATION

Fully fitted kitchen with integrated appliances

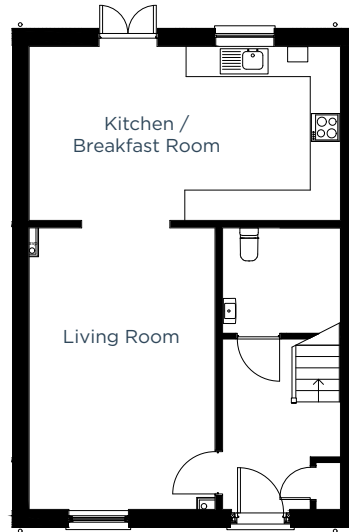
Master bedroom with en-suite

Contemporary bathroom

Downstairs cloakroom

Enclosed, fully turfed rear garden

Energy efficient, gas central heating



GROUND FLOOR

Kitchen / Breakfast Room

6.2m x 3.5m | 20' 3" x 11' 4"

Living Room

5.6m x 3.7m | 18' 3" x 12' 1"



FIRST FLOOR

Master Bedroom

3.9m x 3.3m | 12' 7" x 10' 8"

Bedroom 2

3.9m x 3.3m | 12' 7" x 10' 8"

Bedroom 3

3.5m x 2.8m max | 11' 4" x 9' 1"

01305 213745 | poundbury@morrishhomes.co.uk
morrishhomes.co.uk

Floor plans are provided to indicate proposed floor layout for each home. Room measurements are accurate within + or - 50mm, however it is not recommended that these measurements are used for flooring installation, or such like.