



HOME 387

A four bedroom, semi-detached
home with allocated parking and
garage

SYDENHAM SQUARE
— POUNDBURY —

HOME 387

A four bedroom, semi-detached home with a garage and allocated parking

SPECIFICATION

Fully fitted kitchen with appliances

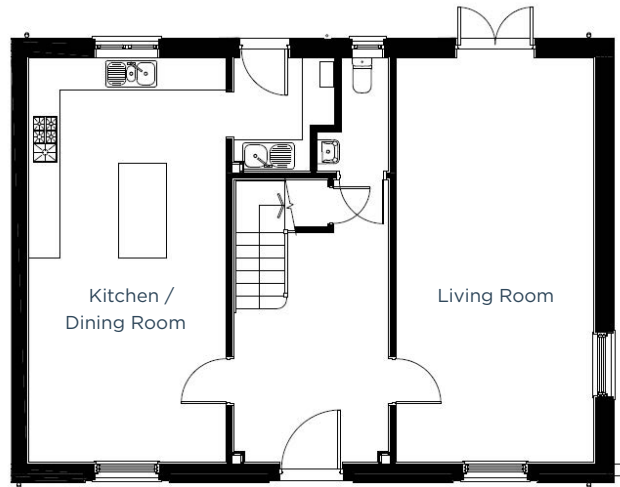
Master bedroom with en-suite

Contemporary bathroom

Downstairs cloakroom

Enclosed, fully turfed rear garden

Energy efficient,
gas central heating



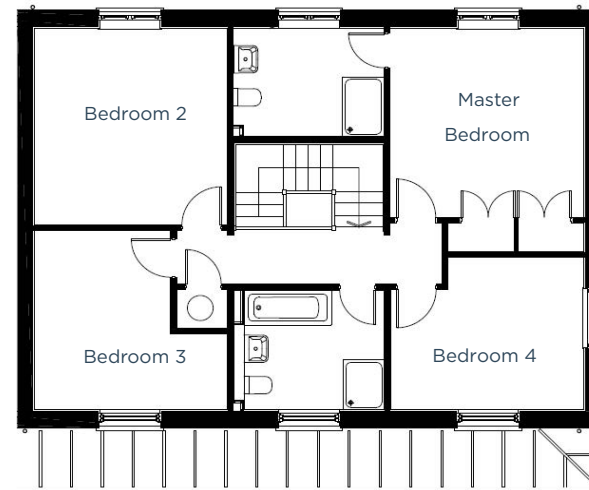
GROUND FLOOR

Kitchen / Dining Room

7.7m x 3.7m | 25' 2" x 12' 1"

Living Room

7.7m x 3.7m | 25' 2" x 12' 1"



FIRST FLOOR

Master Bedroom

3.8m x 3.8m | 12' 4" x 12' 4"

Bedroom 2

3.9m x 3.7m | 12' 7" x 12' 1"

Bedroom 3

3.7m x 3.6m max | 12' 1" x 11' 8"

Bedroom 4

3.8m max x 3.1m | 12' 4" x 10' 1"