

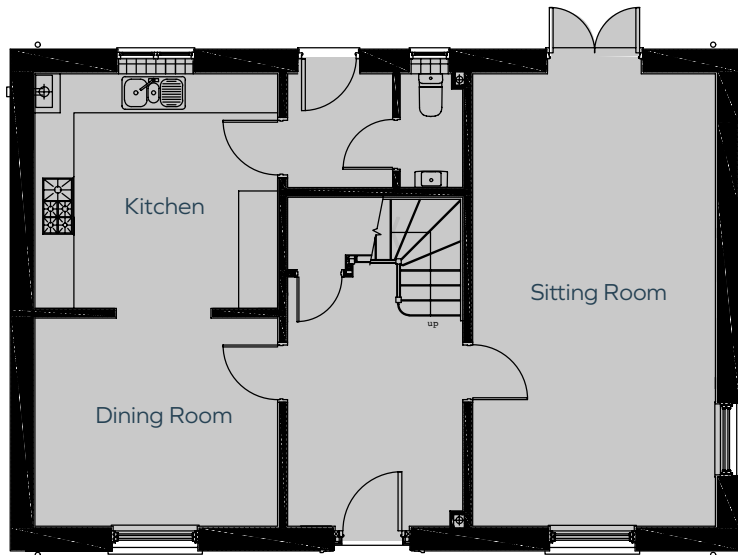


Plot 307

A four bedroom detached house with double garage

 MORRISH
HOMES

Ground Floor



Kitchen	3.7m x 3.6m	12'1" x 11'9"
Dining Room	3.7m x 3.2m	12'1" x 10'5"
Sitting Room	7.0m x 3.7m	22'11" x 12'1"

First Floor



Bedroom 1	3.7m x 4.1m max	12'1" x 10'9"
Bedroom 2	3.7m x 2.6m	12'1" x 8'10"
Bedroom 3	3.7m x 3.4m	12'1" x 11'5"
Bedroom 4	3.7m max x 3.3m max	12'1" x 10'9"

Plot 307 Total area: 144sqm / 1550sqft

Plot floor plans are provided to indicate proposed floor layout for each home. Room measurements are accurate within + or - 50mm, however it is not recommended that these measurements are used for flooring installation, or such like.