

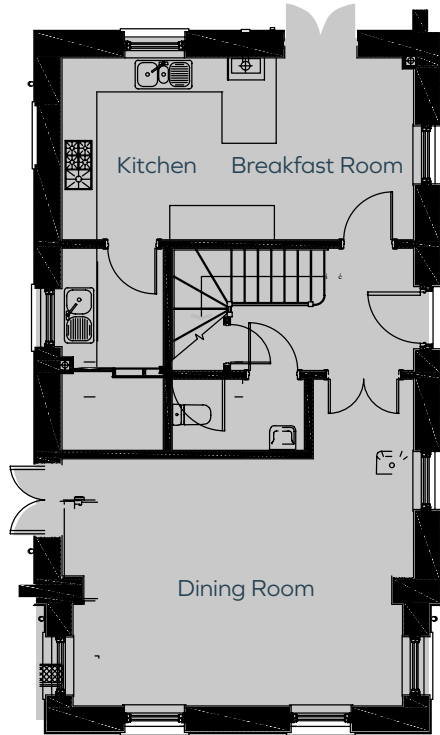


Plot 306

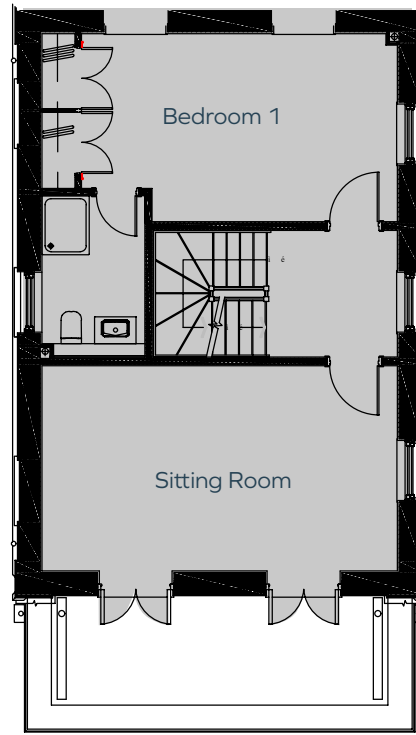
A four bedroom detached house with double garage

 MORRISH  
HOMES

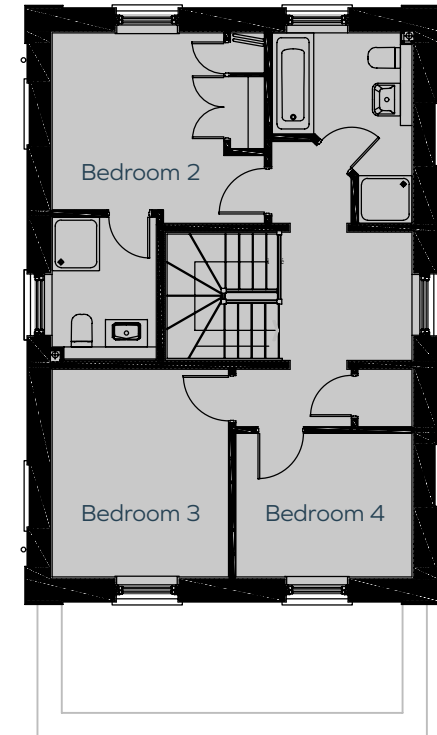
## Ground Floor



## First Floor



## Second Floor



Kitchen/Breakfast Room	6.1m x 3.2m	20'0" x 10'5"
Dining Room	6.1m x 4.3m	14'1" x 13'5"
Sitting Room	6.1m x 3.5m	20'0" x 11'5"

Bedroom 1	6.1m max x 3.2m max	17'8" x 10'5"
Bedroom 2	3.6m x 3.0m	11'5" x 9'10"
Bedroom 3	3.5m x 3.0m	11'5" x 10'5"
Bedroom 4	3.0m x 2.4m	9'10" x 7'10"

## Plot 306 Total area: 182sqm / 1959sqft

Plot floor plans are provided to indicate proposed floor layout for each home. Room measurements are accurate within + or - 50mm, however it is not recommended that these measurements are used for flooring installation, or such like.