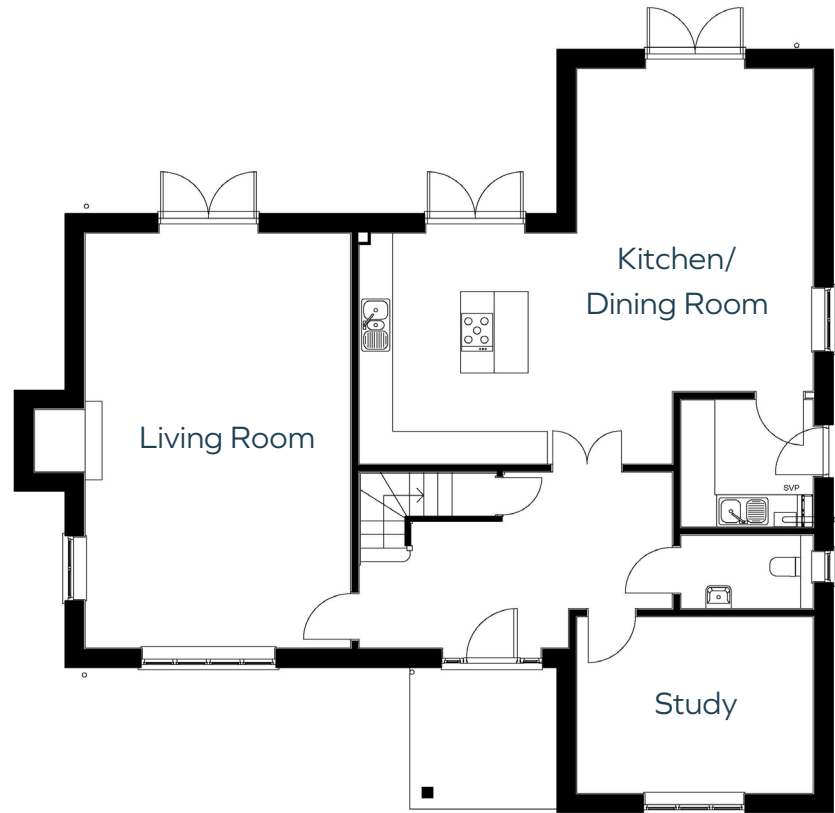




Plot 23

A spacious four double bedroom detached house with double garage and driveway

Ground Floor



Kitchen/Dining Room	8.1m max x 5.9m	26'7" x 19'4"
Living Room	4.7m x 7.6m	15'5" x 24'11"
Study	4.2m x 3.3m	13'9" x 10'10"

First Floor



Bedroom 1	4.5m x 4.3m	14'9" x 14'1"
Bedroom 2	3.3m x 4.3m	10'10" x 14'1"
Bedroom 3	3.6m x 3.2m	11'10" x 10'6"
Bedroom 4	4.2m x 3.7m	13'9" x 12'1"

Plot 23 Total area: 232sqm/2500sqft

Plot floor plans are provided to indicate proposed floor layout for each home. Room measurements are accurate within + or - 50mm, however it is not recommended that these measurements are used for flooring installation, or such like.