



93

92

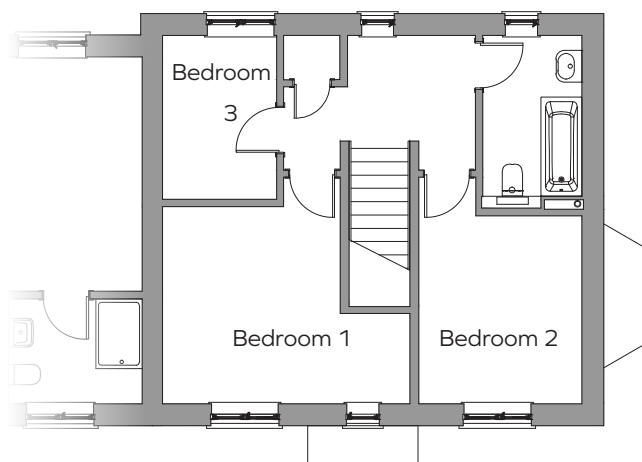
## Plot 92

Three bedroom semi-detached home with enclosed rear garden, garage and off-road parking.

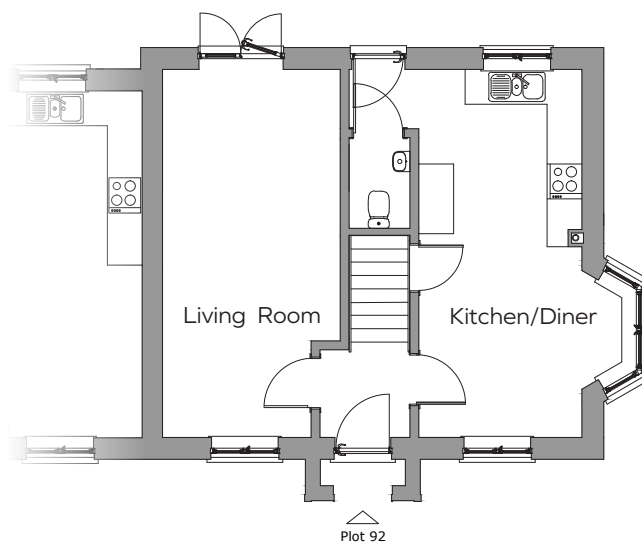


MORRISH HOMES  
BUILDING QUALITY THROUGH GENERATIONS





FIRST FLOOR PLAN



GROUND FLOOR PLAN

## Plots 92

Living room / Study	6.3m x 3m	20'8" x 9'10"
Kitchen / Dining room	6.3m x 2.8m + bay window	20'8" x 9'2"
Bedroom 1	3.7m max x 3.2m	12'1" x 10'5"
Bedroom 2	3.2m x 2.8m	10'5" x 9'2"
Bedroom 3	2.8m x 1.9m	9'2" x 6'2"
Single Garage		

## Plots 92 Total area: 994 Sqft

Plot floor plans are provided to indicate proposed floor layout for each home. Room measurements are accurate, within + or - 50mm, however it is not recommended that these measurements are used for flooring installation, or such like.

\*The CGI representation shown may not completely reflect all aspects of the external finish to this property. Before reserving, please view the drawings with the sales representative or if the property is built ensure a viewing of the property takes place before reserving.



MORRISH HOMES  
BUILDING QUALITY THROUGH GENERATIONS