

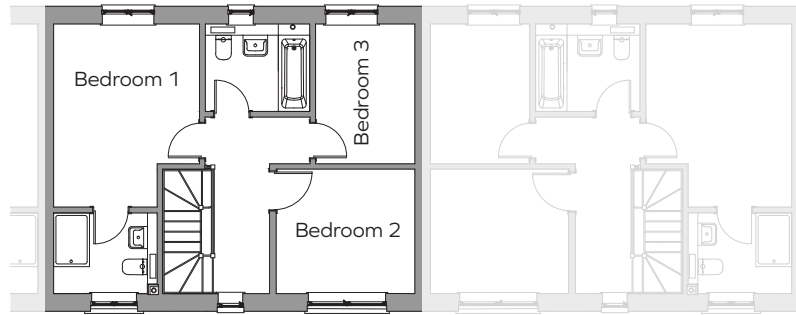


## Plot 60

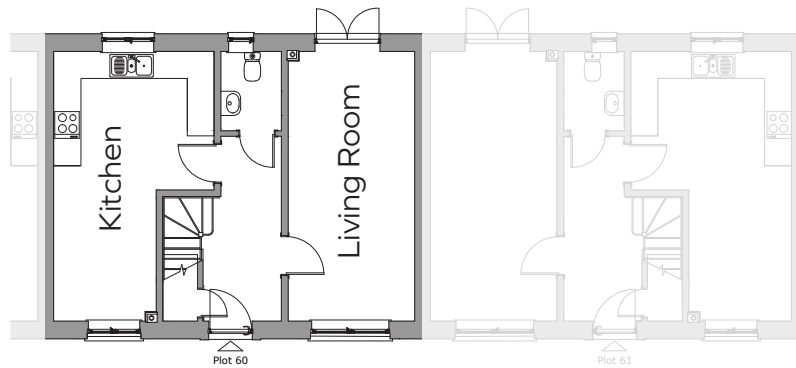
Three bedroom home with double aspect kitchen/diner, double aspect sitting room and WC to the ground floor. The first floor enjoys 3 bedrooms, including a master bedroom with an en-suite and family bathroom.



**MORRISH HOMES**  
BUILDING QUALITY THROUGH GENERATIONS



FIRST FLOOR PLAN



GROUND FLOOR PLAN

## Plot 60

Living room	6m x 2.8m	19'6" x 9'1"
Kitchen / Dining room	6m x 3.6m narrowing into dining area 2.3m	19'6" x 11'8" to 7'5"
Bedroom 1	4.1m x 3.2m	13'4" x 10'4"
Bedroom 2	3.1m x 2.8m	10' x 9'1"
Bedroom 3	3.1m x 2.2m	10' x 7'2"
Single Garage		

## Plot 60 Total area: 1044 Sqft

Plot floor plans are provided to indicate proposed floor layout for each home. Room measurements are accurate, within + or - 50mm, however it is not recommended that these measurements are used for flooring installation, or such like.

\*The CGI representation shown may not completely reflect all aspects of the external finish to this property. Before reserving, please view the drawings with the sales representative or if the property is built ensure a viewing of the property takes place before reserving.



**MORRISH HOMES**  
BUILDING QUALITY THROUGH GENERATIONS