



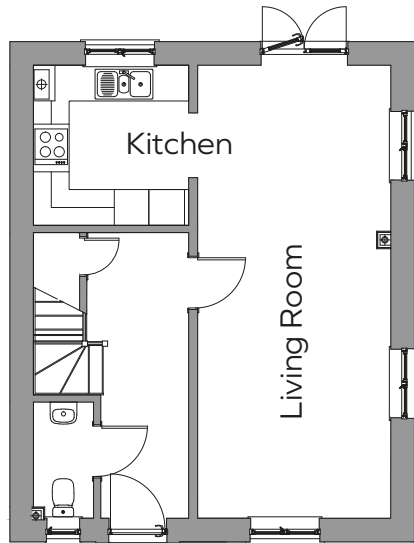
## Plot 17

Three bedroom detached home with master en-suite, enclosed rear garden, off road parking and garage.

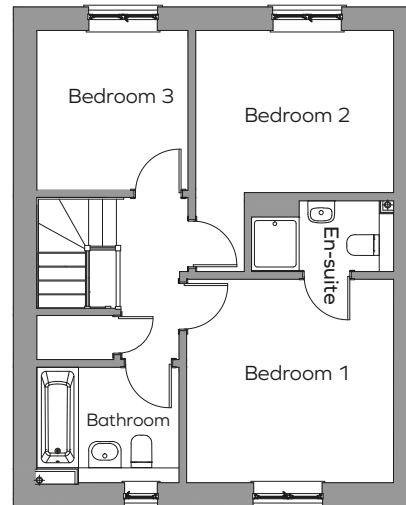


**MORRISH HOMES**  
BUILDING QUALITY THROUGH GENERATIONS

## Ground floor



## First floor



### Plot 17

Living room	7.6m x 3.2m	24'9" x 10'4"
Kitchen / breakfast room	2.7m x 2.6m	8'8" x 8'5"
Bedroom 1	3.5m x 3.4m	11'4" x 11'1"
En-suite shower room		
Bedroom 2	3.3m x 2.7m	10'8" x 8'8"
Bedroom 3	2.7m x 2.5m	8'8" x 8'2"
Bathroom		

## Plot 17 Total area: 981 Sqft

Plot floor plans are provided to indicate proposed floor layout for each home. Room measurements are accurate, within + or - 50mm, however it is not recommended that these measurements are used for flooring installation, or such like.

\*The CGI representation shown may not completely reflect all aspects of the external finish to this property. Before reserving, please view the drawings with the sales representative or if the property is built ensure a viewing of the property takes place before reserving.



**MORRISH HOMES**  
BUILDING QUALITY THROUGH GENERATIONS