



HOME 5

A three bedroom, detached home with single garage and two parking spaces

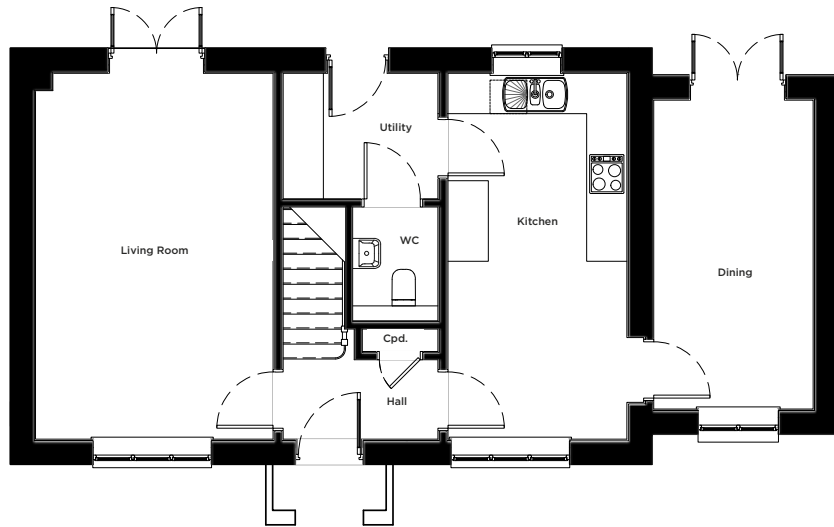


JUBILEE GREEN

— CHARLTON MARSHALL —

HOME 5

1173 sq ft | 109m²



GROUND FLOOR

Kitchen

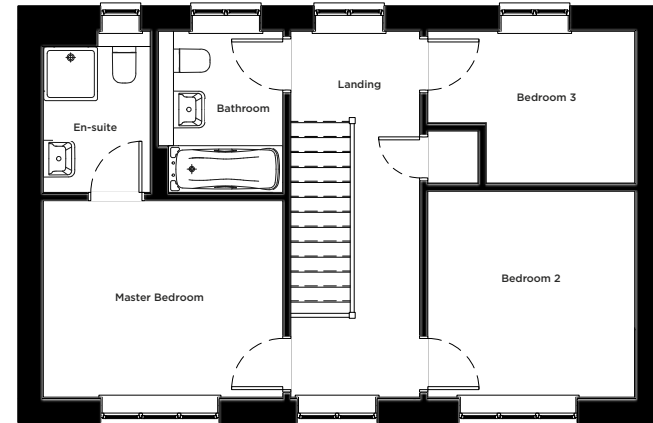
5.5m x 2.7m | 17' 11" x 8' 9"

Dining

4.6m x 2.4m | 15' 1" x 7' 9"

Living Room

5.5m x 3.5m | 17' 11" x 11' 7"



FIRST FLOOR

Master Bedroom

3.6m x 2.9m | 11' 8" x 9' 7"

Bedroom 2

3.1m x 3.1m | 10' 1" x 10' 1"

Bedroom 3

3.1m x 2.3m | 10' 1" x 7' 5"

01202 406127

morrishomes.co.uk

Floor plans are provided to indicate proposed floor layout for each home. Room measurements are accurate within + or - 50mm, however it is not recommended that these measurements are used for flooring installation, or such like. CGIs are not to scale. Finishes and materials may vary from those shown and landscaping is illustrative only.