

HUNTICK GREEN

— LYTCHETT MATRAVERS —





Welcome to Huntick Green

Huntick Green is a stunning development nestled in the highly sought-after village of Lytchett Matravers in Dorset. With all the benefits of rural living coupled with the convenience of being just 6 miles away from the nearest towns, Huntick Green represents the best of both worlds.

This superb development features just 46 beautiful homes, offering you the chance to become part of this intimate, close-knit community. Each new home has been lovingly built in a way that reflects the Morrish values, blending stylish contemporary interiors with traditional exteriors that complement their surroundings.

Idyllic country living

A great deal of care has gone into creating a neighbourhood that's built around the area's existing mature landscaping. As you take a stroll through Huntick Green, you'll enjoy striking old oak trees and a pond that attracts local wildlife. You'll also have some of Dorset's finest countryside and coastal paths right on your doorstep.



A distinctive place to call home

For breathtaking clifftop walks, quiet country trails, picturesque rolling hills and charming market towns with an abundance of shops and restaurants to discover, Dorset is the place to be. Brimming with stunning views, quaint villages and a wealth of charm and history, the county offers endless opportunities for adventure, relaxation and exploration.

There's so much to take in, from ancient hill forts and fascinating museums, to the dramatic hilltop ruins of Corfe Castle, elegantly landscaped gardens and a whole host of family attractions. Much of rural Dorset has the honour of being designated an Area of Outstanding Natural Beauty. The famous Jurassic Coast, England's first UNESCO Natural World Heritage Site, covers 95 miles from Purbeck to Lyme Regis and continues as far as Exmouth in Devon.





Dorset is renowned for its fresh, tantalising local produce. With over 8,000 years of farming and fishing heritage, it's no surprise that the area has such a variety of incredible food and drink on offer. With everything from fresh seafood and local ales to mouth-watering cheeses, sausages and preserves, food lovers will be spoilt for choice.



Where country living meets convenience

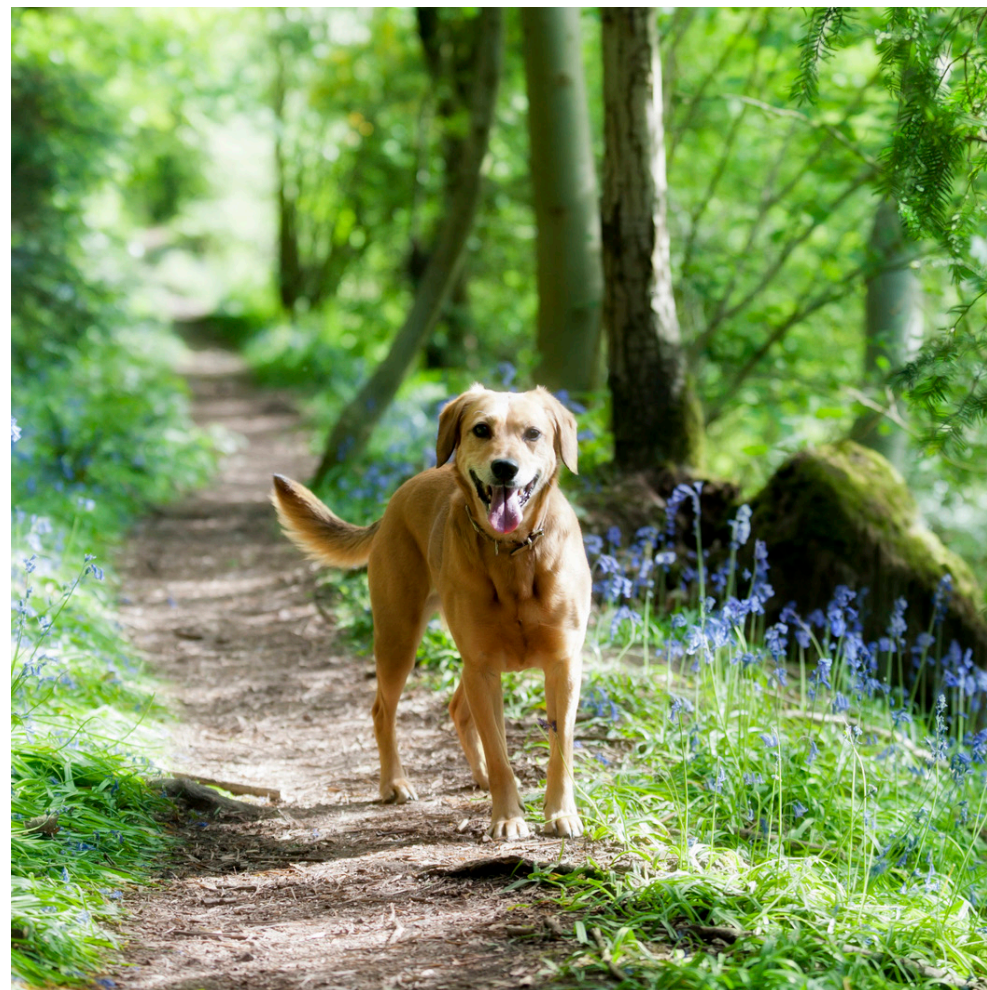
Lytchett Matravers is ideally located to offer the best of rural living with all the convenience of being just six miles away from the nearby towns of Poole, Wareham and Wimborne.

The village also offers a good selection of shops and other local amenities, as well as excellent transport links with easy access to the A35, a bus service with good links to nearby towns, and train stations in Poole, Hamworthy and Wareham (with direct trains to Southampton and London Waterloo).

With plenty of open green space and recreational areas, the area is perfect for families and those who enjoy an active lifestyle. For children, there are two excellent local schools: Lytchett Matravers Primary School and Lytchett Minster School. There is also a children's play area, basketball court and a skateboard park, as well as clubs and activities such as Beavers, Cubs, Brownies, Scouts, Guides, and an Army Cadet Force detachment.

Lytchett Matravers is also home to a good selection of local shops (including a large Tesco Express store), a Church of England Parish church and a Methodist church. When residents feel like letting their hair down, there is a choice of two local pubs (the Chequers Inn and the Rose and Crown) as well as nearby Poole Quay, with its eclectic mix of great pubs and restaurants. The ferry port in Poole runs regular ferry services to Cherbourg, Guernsey and Jersey – perfect for a relaxing day trip or mini-break.





Living at the gateway to the Purbeck Hills and Dorset Heath, you'll enjoy easy access to the coast and miles of beautiful Dorset countryside. With plenty of country walks and unspoiled scenery right on the doorstep, Huntick Green is the perfect choice if you're looking to get away from the hustle and bustle of the city and enjoy a more relaxed lifestyle.

So much to explore

The local area is home to a variety of wonderful attractions that offer everything you need for relaxation, adventure and fun with the family.

Whether you want to enjoy a piece of Dorset history, take a stroll through unspoilt woodlands, or delight your tastebuds at one of the area's finest eateries, Huntick Green has it all ... right on your doorstep.

Upton Country Park

With over 140 acres of beautiful gardens, open parkland, woodland and shoreline, Upton Country Park makes a wonderful day out for the whole family. Home to the Georgian Grade II* listed Upton House, this stunning spot is one of Poole's top attractions.



Kingston Lacy

Once the lavish home of the wealthy Bankes family, Kingston Lacy is now a beautiful National Trust property. The house and gardens are open to the public, offering plenty of family fun. The estate also boasts 8,500 acres of unspoilt countryside, with 12 way-marked walks for visitors to enjoy.

Corfe Castle

The dramatic ruins of Corfe Castle stand on a natural hill guarding the principal route through the Purbeck Hills. Now owned by the National Trust and open to the public, the castle dates back to the 10th century. The village of Corfe is home to a small selection of shops, pubs and cafes.



4.



Poole

The nearby town of Poole is home to the Dolphin Shopping Centre, a fantastic selection of restaurants and pubs, and popular tourist spot, Poole Quay. There are several parks with play areas, tennis courts and a miniature railway, as well as a lake that offers activities such as sailing, windsurfing, kayaking and rowing.

Wimborne Minster

The market town of Wimborne Minster is famous for having one of the largest model towns in England, as well as one of just a few surviving chained libraries in the world. Every summer in June, the town hosts the Wimborne Minster Folk Festival, a weekend-long traditional folk dance and music event.

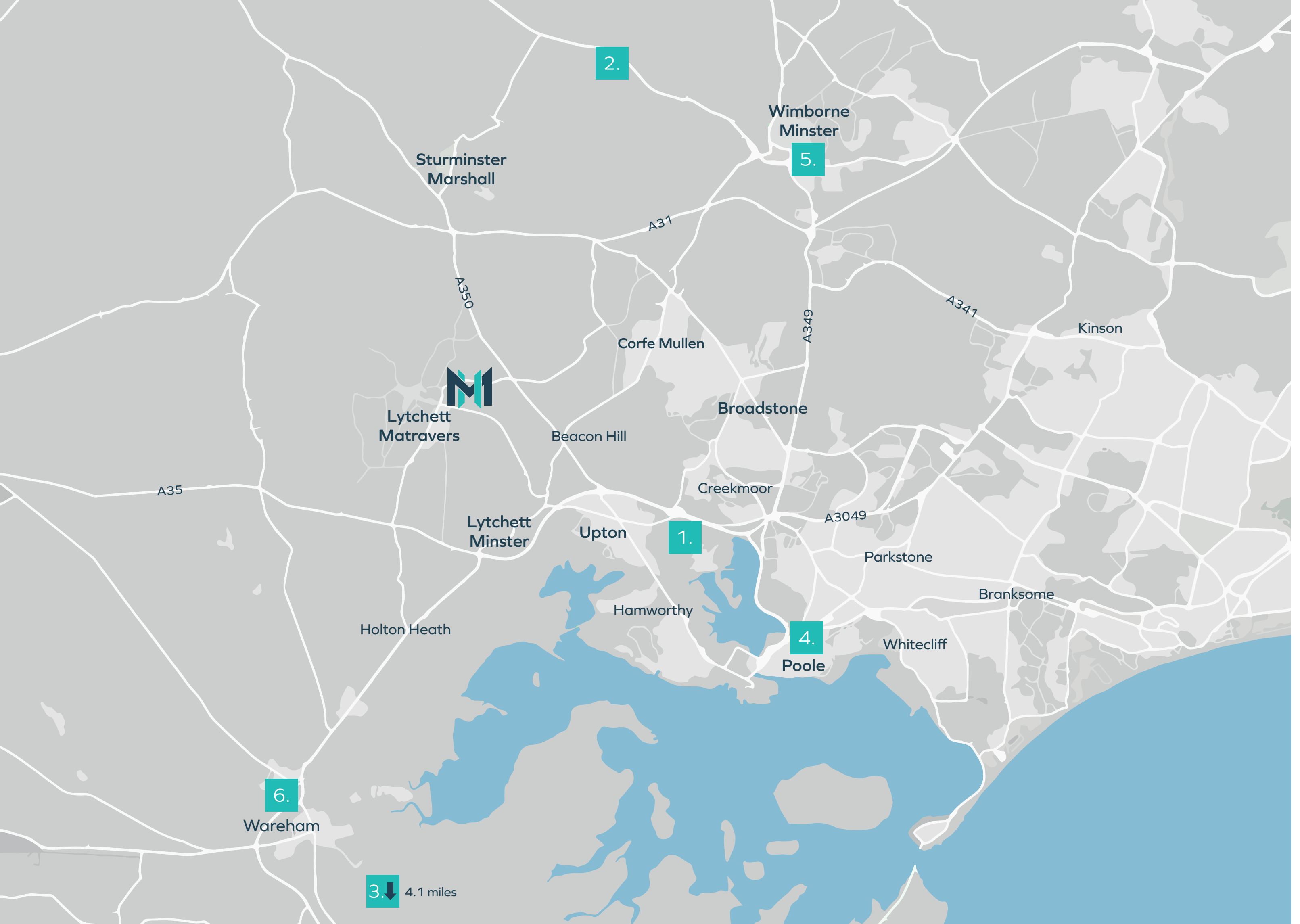


6.



Wareham Quay

Beautiful Wareham Quay is home to several traditional pubs that overlook the River Frome, as well as a weekly market with stalls selling fresh produce, cheeses, preserves, collectables and more. For visitors wishing to explore the local area by boat, there is the option of taking one of Wareham Quay's regularly scheduled scenic river cruises.



2.

Wimborne
Minster

5.

Sturminster
Marshall

A31

A350

Corfe Mullen

A349

A341

Kinson



Lytchett
Matravers

Broadstone

Beacon Hill

A35

Creekmoor

A3049

Lytchett
Minster

Upton

1.

Parkstone

Branksome

Holton Heath

Hamworthy

4.

Whitecliff

Poole

6.

Wareham

3. ↓

4.1 miles

- 1. Upton Country Park 5.4 miles
- 2. Kingston Lacy 7.3 miles
- 3. Corfe Castle 12.2 miles
- 4. Poole 5.9 miles
- 5. Wimborne Minster 7.5 miles
- 6. Wareham Quay 7.7 miles

Education

- Lytchett Matravers Primary School 0.6 miles
- Lytchett Matravers Library 0.4 miles
- Lytchett Minster Secondary School 1.8 miles
- Bournemouth & Poole College 7.2 miles
- Bournemouth University 9.7 miles

Leisure

- Rose & Crown 0.3 miles
- Chequers Inn 0.7 miles
- English Oak Vineyard 0.8 miles
- Bulbury Woods Golf Club 1.8 miles

Essentials

- Tesco Express 0.3 miles
- Post Office 0.3 miles
- Lytchett Pharmacy 0.3 miles
- Heath Cottage Surgery 0.5 miles

- Huntick Green, BH16
- A35 1.8 miles
- Hamworthy Train Station 3.9 miles
- Poole Ferry Terminal 5.7 miles
- Wareham Train Station 14.3 miles
- Bournemouth Airport 14.3 miles
- M27 34 miles
- M3 39 miles

Your new home at Huntick Green

Huntick Green is home to a selection of 2, 3, 4 and 5 bedroom detached houses. Each home benefits from a turfed rear garden, patio area, driveway and garage.

We believe that vernacular design that incorporates local materials and traditions is what gives a place its unique character. That's why our homes are designed to blend seamlessly with their neighbouring communities, with elegant, traditional exteriors that honour and reflect the local aesthetic. Tremendous attention to detail has also gone into the interior design of each home, to provide you with everything you will need for stylish, contemporary living.



Individual inside and out

Each home at Huntick Green has been carefully designed to contribute to the overall plan, reflect the original architecture and character of the area and preserve important greenspace for your family.



Building quality through generations



Providing customers with that personal touch

We place our customers and the local community at the heart of everything we do. As well as individually designing all our new homes, we also offer the same personal touch to every single one of our customers.

Our friendly team will guide you through the entire process, from finding your dream home right through to getting you settled in. With our two-year warranty, ten-year NHBC warranty and appliance guarantees, you can rest assured that your new home is in safe hands.

Crafting individual homes, from our family to yours

Since the early fifties, the Morrish family has shared a passion for crafting exceptional homes and creating distinctive street scenes that will be cherished by residents for generations to come. Over the years, we've earned an outstanding reputation for our fine craftsmanship, quality finish and attention to detail.

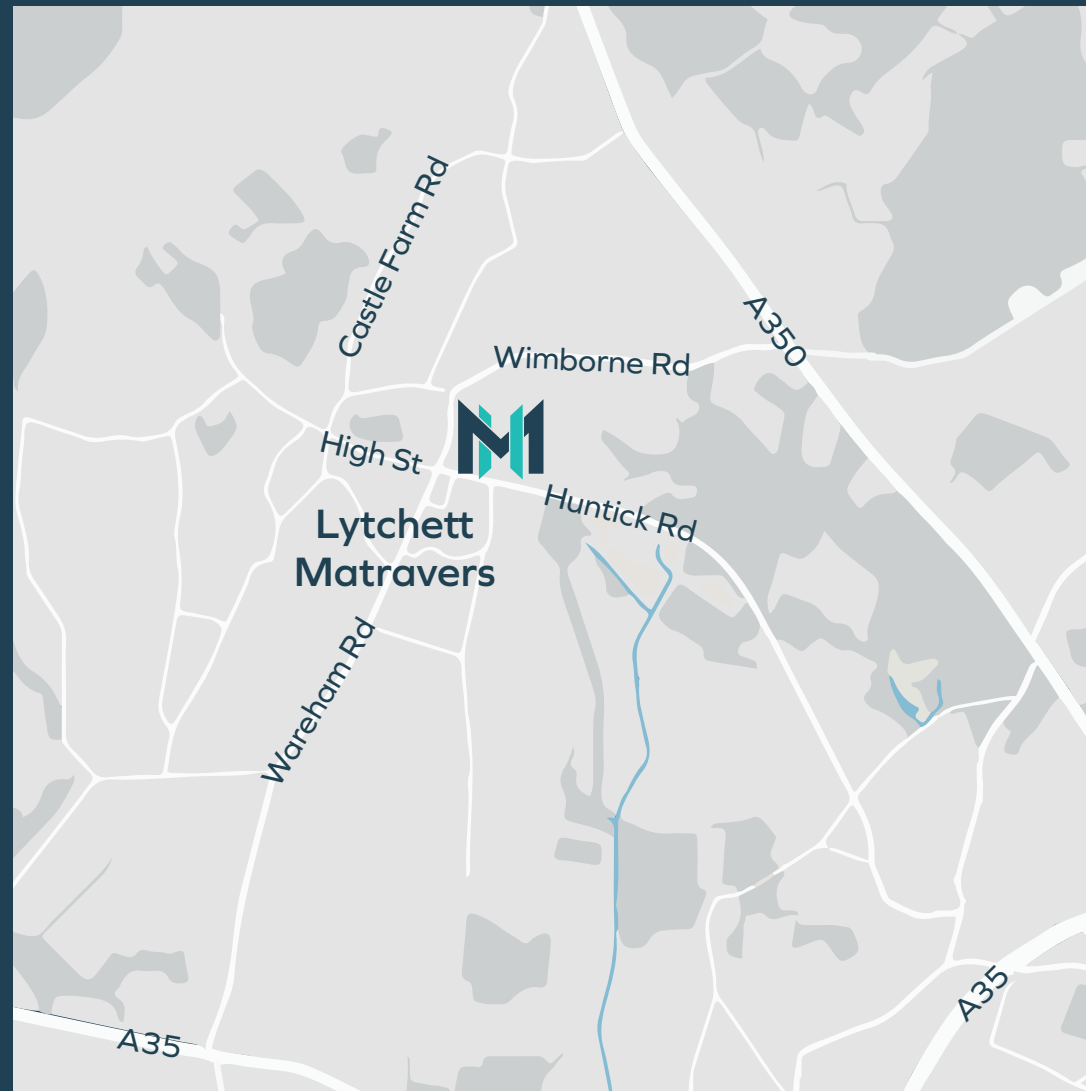
Family values are at the heart of everything we do, which is why we think of our loyal staff and valued customers as a part of the Morrish family.

Creating special places to be proud of

We are passionate about bringing traditional building styles to modern day living, creating special places which preserve the character and essence of their existing surroundings. Our homes are built by local craftsmen using locally sourced materials, a reflection of our commitment to sustainable construction.

We're proud to say that our unique approach to development is why we've been chosen to work with pioneering legacy landowners, including the Duchy of Cornwall and the Ashfield Estate. While working as part of these award-winning partnerships, we've been able to positively influence modern day development in a way that benefits the community.





Huntick Green, Green Lane, Lytchett Matravers,
Poole, Dorset, BH16 6AB

morrishomes.co.uk



This brochure is intended as a sales aid and guide to Morrish Homes. The accuracy of any visual image, measurement, depiction of environment, plot position and home layout should be confirmed with the selling agent or through your solicitor. Purchasers or prospective purchasers (whether or not they enter into a contract to purchase a home within the development) should not rely on anything printed in this brochure or orally indicated by sales staff as forming any part of any contract to purchase a home. Please note floor plans and dimensions are taken from architectural drawings and are for guidance only. Kitchen layouts are for illustrative purposes only. Computer generated images are not to scale. Finishes and materials may vary from those shown and landscaping is illustrative only. All photography in this brochure is indicative of the local area and does not represent the specific site surroundings or aspect. Photography and images are used for illustrative purposes only.